

Motion and presence detectors



two
in one

More capabilities, less consumption

:hager

Two in one Motion and presence detectors



Hager new generation of energy efficient detectors combines both motion and presence detection into a single device to guarantee the most accurate detection in all situations.

And to prevent premature aging of their contacts, they also come equipped with a “zero crossing” technology that controls LED lamps inrush current to a minimum.

Housed in a discrete design, they can be quickly and securely mounted and are suitable for residential and commercial applications.

EE805A motion and presence detector, installed variant



Recommended for:

- Living areas
- Stairwells
- Restrooms
- Functional buildings

More capabilities Less consumption

Reliable detection

The new motion and presence detectors are equipped with sensitive passive infrared (PIR) technology. They react to differences in temperature and motion and can detect body movements as well as smaller movements. The area of motion detection comprises 6 m in diameter, while the presence detection covers a diameter of 4 m at an installation height of 2.5 m. The recommended installation height is between 2.5 and 3.5 m, with 4 m as an absolute maximum.

Quick installation

The EE804A mounted device consists of a detachable lower section with screw-fit connection terminal. It can be attached to any standard socket or mounted directly on the ceiling. The upper section, in which the detection optics are located, is then plugged in and screwed into place. Once that's done, it's all ready to use!

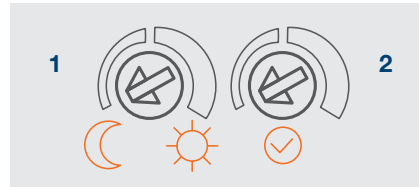
The EE805A installed device is equipped with a rapid mounting system consisting of spring clamps – robust enough to keep the detector resistant to vibration on the suspended ceiling, yet flexible enough that it can be taken out to adjust the settings on the potentiometer. To link it up, simply connect the cables via a plug-in terminal. Strain relief with

cable ties ensures long-term secure contact.

Easy to set up

The user can set up and adjust all major lighting parameters via two easily accessible potentiometers:

- **Potentiometer 1** adjusts the response brightness (between 5 and 1000 lux), allowing the lighting to be optimally adapted to the daylight.
- **Potentiometer 2** controls the duration of the luminescence (between 2 sec and 30 min).



Built to last

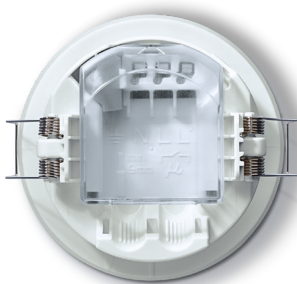
Modern lighting fixtures such as LEDs and halogen lamps often have high inrush currents, sometimes up to 1000 times your nominal current. This puts a strain on the contacts of the connected motion and presence detectors and can lead to premature wear of the relay. To prevent this, the new detectors from Hager have been equipped with zero-cross switching for the first time. This calculates the zero-crossing of the AC voltage and

keeps the inrush current to a minimum – thus sparing the relay contacts and extending durability, even in high switching occurrence.

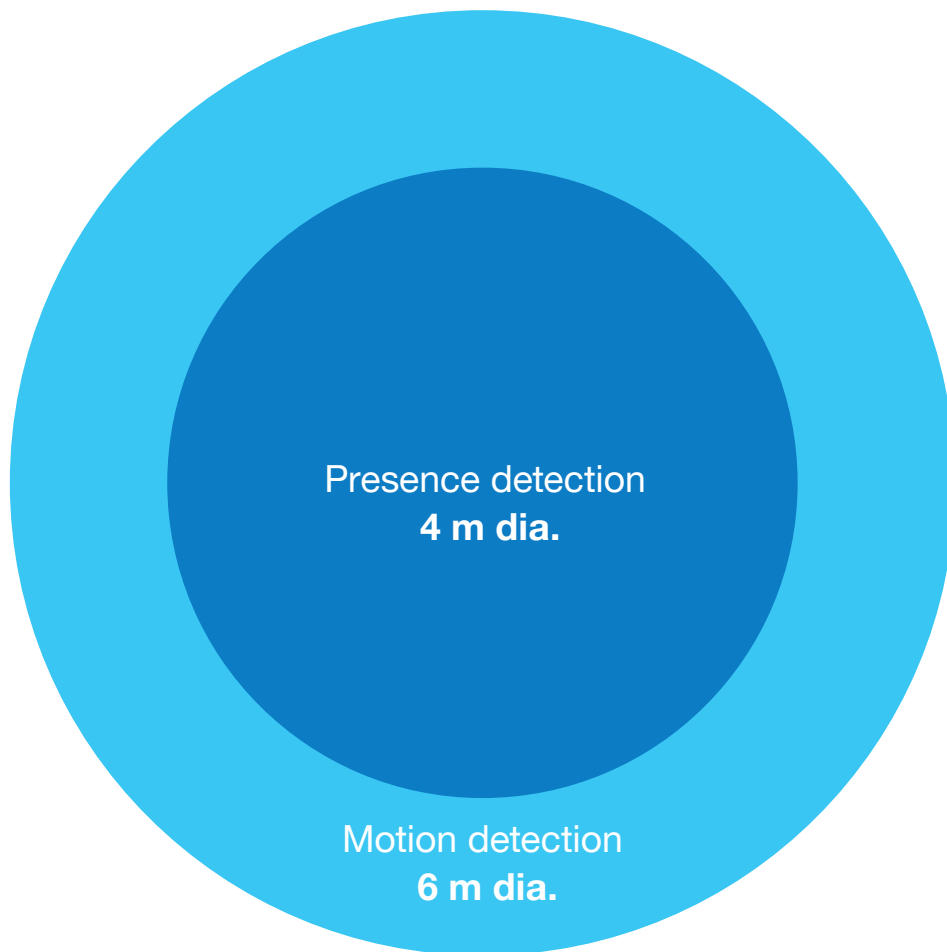
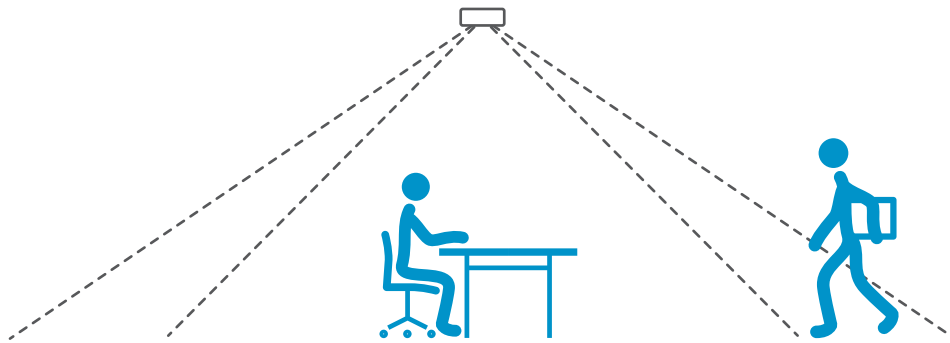
Long-term savings

The electricity prices for private households have risen by 56% over the last ten years. It's therefore a good idea to install motion and presence detectors, as they save up to 90% of lighting energy by switching on lights strictly when they are needed. Not only that, but the new devices by Hager will win over your customers with an extremely low standby consumption of just 0.3 W. So now they have two good reasons to invest in a detector!

**Energy savings
of up to 90%
Standby
consumption of
only 0.3 W**



EE805A installed device,
rear view





Hager Electro Pty Ltd
Unit 17/2-8 South Street
Rydalmere NSW 2116

Phone: 1300 850 253
Fax: 1300 424 372
customerservice@hagerelectro.com.au
hagerelectro.com.au

DISCLAIMER: Whilst every effort has been made to ensure the reliability of the information is correct at time of publication, Hager cannot guarantee the accuracy of all of the information contained herein. Changes/updates brought to the attention of Hager, once verified, will be corrected in future editions.