

quadro evo

**1600A**  
**switchboard**  
**solution**

**:hager**



# quadro evo

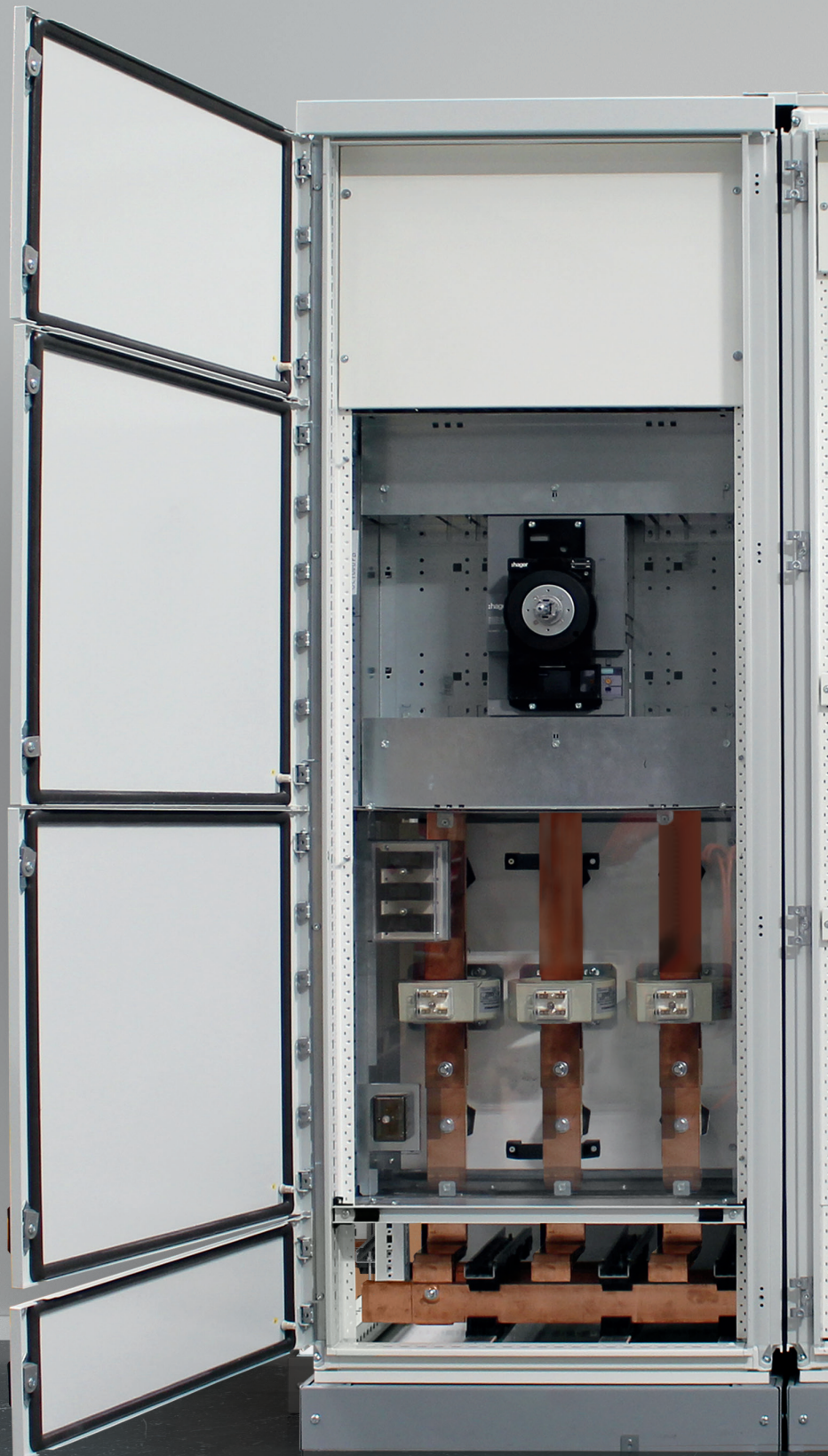
## LV power distribution switchboard system

**01**  
Modular interior and  
exterior design.

**02**  
Improved capabilities  
with h3+ MCCB  
integration.

**h3+**

**03**  
Form of segregations  
from 1 up to 3b and 4ah,  
offering safety features  
and cost efficiency.







**04**

**Tested copper busbar system up to 1600A.**

**05**

**The system is compliant to AS/NZS 61439.2.**

**06**

**The design allows for more space - making wiring and maintenance easy.**

**07**

**Simple functional unit mounting kits, fewer screws and a clear positioning: just some of the great features to the system.**





# Safety first.



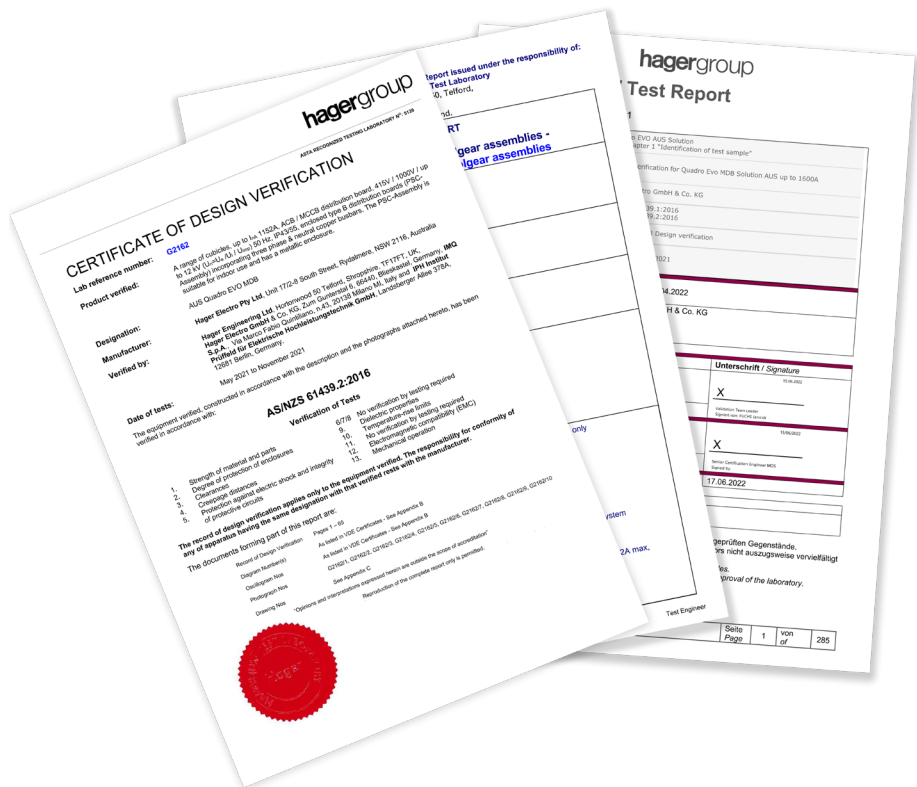
## 01 Flexibility for the right safety levels

Selecting the appropriate form of segregation is about finding the right mix of safety, cost and size for the specific installation. The quadro evo system offers form 1, 2b, 3b and 4ah.

## 02 Compliance - Tested and approved

quadro evo is tested and fully compliant with Australian Standards (AS/NZS 61439.2).



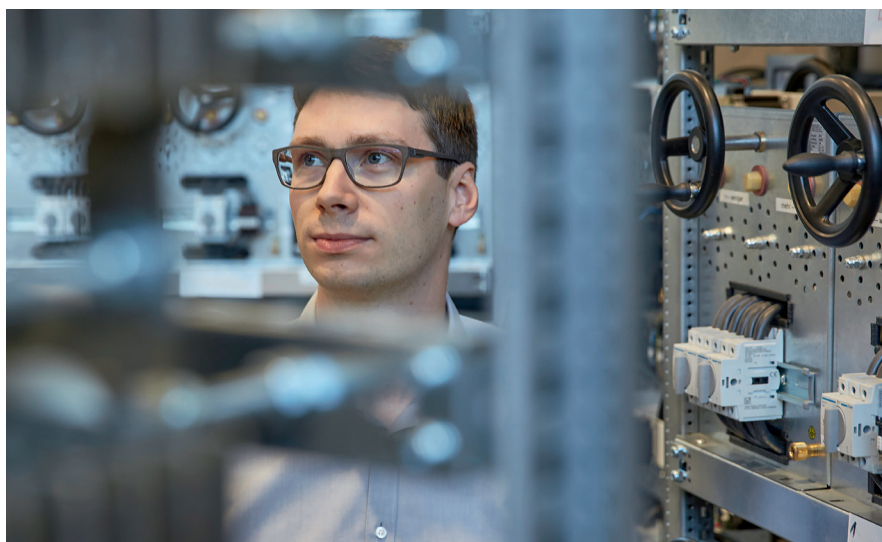


### 03 Reliability - Design verified assembly

Protection against electric shocks, easy fixations and an overall higher resistance due to galvanised metal parts, IK10 shock protection, IP55 water and dust protection and improved short circuits withstand strength (Icw 50kA).

### 04 Confidence - Hager Support

Our international and local technical support team can assist with your switchboard design, product and compliance inquiries.





# Down to the smallest detail

quadro evo features guarantee flexibility, robustness and ease of assembly.

01

## Flexibility

quadro evo is a modular switchboard system which comes in two different heights and four different widths.

02

## Robustness

The design stands firm, with new performant internal system for up to 1600A and  $I_{cw}$  50 kA applications.

03

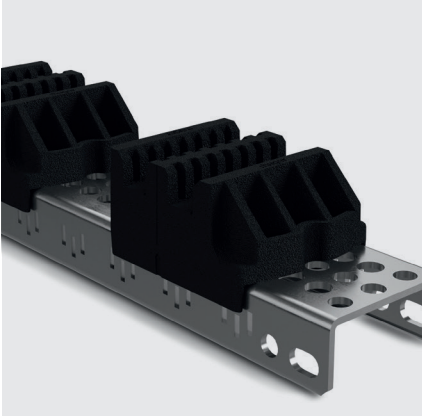
## Ease of assembly

Comes with a pre-hanging function and many clips instead of screws (and more screws of the same type). With these features, assembly becomes efficient.

Pre-configured functional unit kits speed up the assembly up even more.







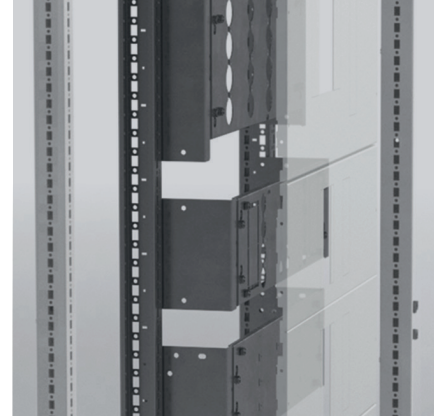
## Busbar support and brackets

quadro evo's busbar brackets allow for clipping instead of screws. They are tested to hold copper busbars firmly.



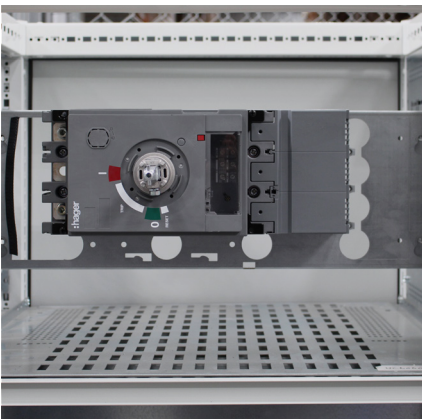
## Uprights

The vertical functional uprights allow for more flexibility and ease of installation of functional units and segregations. Horizontal supports are useful to mount partial functional uprights.



## Functional unit kits

Pre-configured functional unit kits allow for functional unit installations to be easy and fast.



## Easy segregation

quadro evo offers internal separation flexibility with a range of segregations:

- rear vertical segregation
- rear horizontal segregation
- rear side segregation
- front horizontal segregation
- front side segregation
- full horizontal segregation
- full side segregation



## Handling

Cabinets can be handled by the lifting rings or lifting brackets:

- Single enclosure (1000 kg) handled by lifting rings.
- Assembly of several enclosures handled by lifting brackets (above 1000kg).



## Door options

quadro evo comes with two options:

- partial modular doors
- full high doors



# The complete choice.

quadro evo offers four forms of segregations: 1, 2b, 3b or 4ah. There is a solution for commercial low voltage switchboard projects of any dimension.



## Sizes

H 1900 – 2100 mm  
W 450, 700, 900, 1000 (700 + 300)  
D 600

## IP Ratings

IP43 with modular doors  
IP55 with full high door

## Copper busbar sizes

30mm x 10mm  
40mm x 10mm  
50mm x 10mm  
60mm x 10mm



## MCCB\*

Suitable for main incoming devices and sub circuit breakers.

\*3P-only version available



## Load Break Switch\*

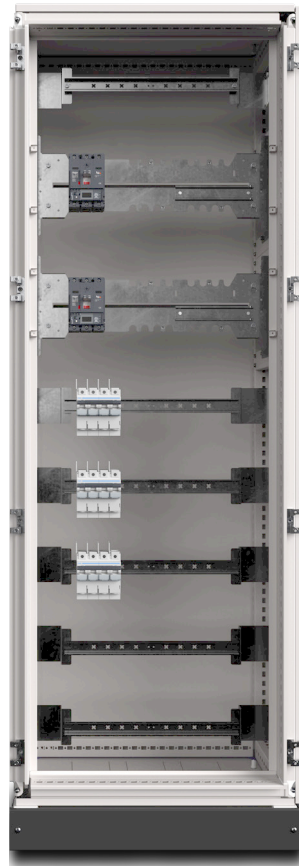
Suitable for main incoming devices and sub main switches.

\*3P-only version available



## MCBs / Modular\*

Suitable for sub-distribution, power meters, surge protection and control components.





# New generation h3+ Moulded Case Circuit Breakers

quadro evo is compliant to AS/NZS 61439.2 in combination with h3+ MCCBs. h3+ is our new MCCB range with enhanced intelligence, safety options and extended setting capabilities.



## High performance

- Rated currents 25A up to 630A
- Breaking capacity Icu 25kA up to 50kA

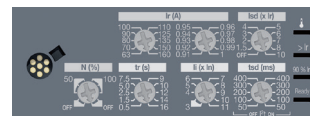
## Precision

- Adjustable tripping curves improve selectivity
- Guaranteed protection using TM and LSI trip units

## Two adjustable tripping units -



**TM**  
Thermal-magnetic  
standard protection



**LSI**  
Extended electronic  
protection



The h3+ moulded case circuit breakers provide reliable protection against overloads and short circuit faults.





**Contact our projects team to design your next switchboard and save time.**

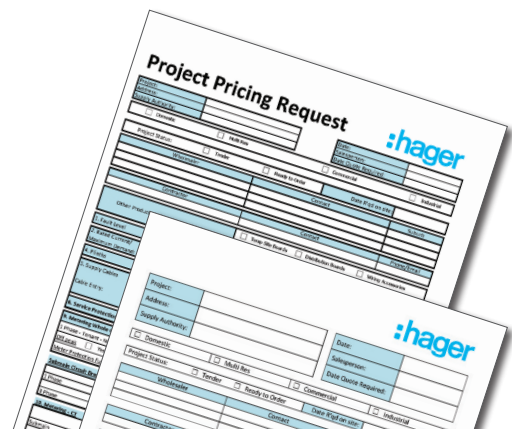
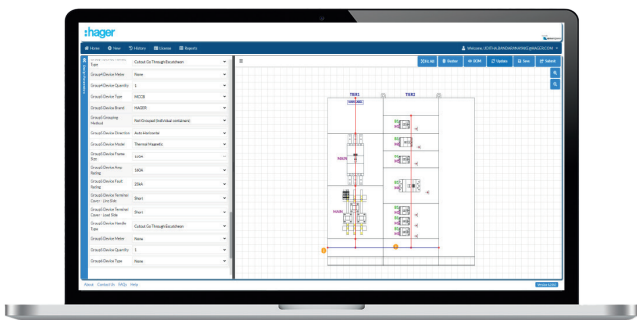
## Our service

Design layouts, single line diagrams and bill of materials will be provided in one go. We also offer heat rise calculations, curve studies and end-to-end project management services.

## Now, how can we help?

Quick contact, expert help and availability at any time. We are here for you.

For project quotes and to receive our Project Pricing Request Form, please contact us on **1300 850 253** or your local sales representative.





**Hager Electro Pty Ltd**

Unit 17  
2-8 South Street  
Rydalmere NSW 2116  
[hagerelectro.com.au](http://hagerelectro.com.au)

**Nationwide sales**

Phone: 1300 850 253  
Fax: 1300 424 372

Email: [customerservice@hagerelectro.com.au](mailto:customerservice@hagerelectro.com.au)

**DISCLAIMER:** Whilst every effort has been made to ensure the reliability of the information is correct at time of publication, Hager cannot guarantee the accuracy of all of the information contained herein. Changes/updates brought to the attention of Hager, once verified, will be corrected in future editions.