

# Office trunking

The tehalit.officea offer is designed to answer to most cases of low voltage and very low voltage distribution of workstations. The range is composed of poles and posts, multi outlet modules and blocks.

tehalit.officea is suitable for offices as well as meeting rooms.



---

DA 200 poles	11.2
DA 200 posts	11.6
Underfloor system	11.7
tehalit.officea	11.8
Ecoline accessories	11.10
Multi outlet blocks NR	11.12
Pull-out multi outlet modules	11.14
Flexible round trunking	11.15
Flexible floor trunking	11.16
Floor trunking	11.17
Cable outlet for raised floor	11.18
Consolidation points	11.19
Technical guide	11.20

---

### 2 ranges:

Fixed pole (S) for:

- accessories 45 mm
- accessories 60 mm and ecoline
- quick and easy mounting by one person by integrated fixing lever
- profiles: single and double sided

Special finishes and RAL colours available on request.

### Colours:

- anodised aluminium, ELN
- pure white, RAL 9010
- black, RAL 7021

### Material:

- body and cover: aluminium
- end plate: polyamide
- fixing system: metal
- ceiling rose: polyamide



DAS452700ELN

### Single sided pole DA 200-45 for accessories 45 mm

- fixed
- slightly curved profile (66 x 66 mm),
- incl. fixing system, spirit level, earthing kit and ceiling rose

Description	Color	Cat. ref.
fixing height from 2.7 to 3 m	anodised aluminium	<b>DAS452700ELN</b>
fixing height from 2.7 to 3 m	pure white	<b>DAS4527009010</b>
fixing height from 3 to 3.3 m	anodised aluminium	<b>DAS453000ELN</b>
fixing height from 3 to 3.3 m	pure white	<b>DAS4530009010</b>
fixing height from 3.3 to 3.6 m	anodised aluminium	<b>DAS453300ELN</b>
fixing height from 3.3 to 3.6 m	pure white	<b>DAS4533009010</b>

### Double sided pole DA 200-45 for accessories 45 mm

- fixed
- slightly curved profile (130 x 66 mm),
- incl. fixing system, spirit level, earthing kit and ceiling rose

Description	Color	Cat. ref.
fixing height from 2.7 to 3 m	anodised aluminium	<b>DAS2452700ELN</b>
fixing height from 2.7 to 3 m	pure white	<b>DAS24527009010</b>
fixing height from 3 to 3.3 m	anodised aluminium	<b>DAS2453000ELN</b>
fixing height from 3 to 3.3 m	pure white	<b>DAS24530009010</b>
fixing height from 3.3 to 3.6 m	anodised aluminium	<b>DAS2453300ELN</b>
fixing height from 3.3 to 3.6 m	pure white	<b>DAS24533009010</b>

### Partition for DA 200-45

- to be ordered separately

Description	Pack qty.	Cat. ref.
partition 2 m	50 m	<b>M2024</b>



L4770

### Frame for 45 mm accessories

- to mount vertically 45 mm accessories like switches, RJ45...

Description	Pack qty.	Cat. ref.
frame	10	<b>L4770</b>

**Single sided pole DA 200-80 for accessories 60 mm**

- fixed
- slightly curved profile (68 x 98 mm),
- incl. fixing system, spirit level, earthing kit and ceiling rose

Description	Color	Cat. ref.
fixing height from 2.5 to 2.8 m	anodised aluminium	<b>DAS802500ELN</b>
fixing height from 2.5 to 2.8 m	pure white	<b>DAS8025009010</b>
fixing height from 2.8 to 3.1 m	anodised aluminium	<b>DAS802800ELN</b>
fixing height from 2.8 to 3.1 m	pure white	<b>DAS8028009010</b>
fixing height from 3.1 to 3.4 m	anodised aluminium	<b>DAS803100ELN</b>
fixing height from 3.1 to 3.4 m	pure white	<b>DAS8031009010</b>
fixing height from 3.4 to 3.7 m	anodised aluminium	<b>DAS803400ELN</b>
fixing height from 3.4 to 3.7 m	pure white	<b>DAS8034009010</b>

**Double sided pole DA 200-80 for accessories 60 mm**

- fixed
- slightly curved profile (136 x 98 mm),
- incl. fixing system, spirit level, earthing kit and ceiling rose

Description	Color	Cat. ref.
fixing height from 2.5 to 2.8 m	anodised aluminium	<b>DAS2802500ELN</b>
fixing height from 2.5 to 2.8 m	pure white	<b>DAS28025009010</b>
fixing height from 2.8 to 3.1 m	anodised aluminium	<b>DAS2802800ELN</b>
fixing height from 2.8 to 3.1 m	pure white	<b>DAS28028009010</b>
fixing height from 3.1 to 3.4 m	anodised aluminium	<b>DAS2803100ELN</b>
fixing height from 3.1 to 3.4 m	pure white	<b>DAS28031009010</b>
fixing height from 3.4 to 3.7 m	anodised aluminium	<b>DAS2803400ELN</b>
fixing height from 3.4 to 3.7 m	pure white	<b>DAS28034009010</b>

**Ceiling rose for fixed poles DA 200**

- spare part

Description	Color	Cat. ref.
for DA200-45, simple	black	<b>DAC457021</b>
for DA200-45, simple	pure white	<b>DAC459010</b>
for DA200-45, double	pure white	<b>DAC2459010</b>
for DA200-80, simple	black	<b>DAC807021</b>
for DA200-80, simple	pure white	<b>DAC809010</b>
for DA200-80, double	black	<b>DAC2807021</b>
for DA200-80, double	pure white	<b>DAC2809010</b>



DAC807021

**Finishing sleeve**

- pole mounting without suspended ceiling
- to hide the cables and the fixing system

Description	Cat. ref.
finishing sleeve	<b>L1840</b>



L1840

### 2 ranges

- mobile pole with flexible ceiling connector (F) for:
  - accessories 45 mm
  - accessories 60 mm and ecoline
  - quick and easy mounting by one person
  - profiles: single and double sided

### Colours

- anodised aluminium, ELN
- pure white, RAL 9010
- black, RAL 7021

### Material

- body and cover: aluminium
- end plate: polyamide
- fixing system: metal
- ceiling rose: polyamide
- base: cast iron

Special finishes and RAL colours available on request.



DAF4520009010

#### Single sided pole DA 200-45 for accessories 45 mm

- with flexible ceiling connector
- slightly curved profile (66 x 66 mm),
- incl. flexible connector, spirit level, earthing kit and ceiling rose
- without base

Description	Color	Cat. ref.
height 2m	anodised aluminium	<b>DAF452000ELN</b>
height 2m	pure white	<b>DAF4520009010</b>



DAF2452000ELN

#### Double sided pole DA 200-45 for accessories 45 mm

- with flexible ceiling connector
- slightly curved profile (130 x 66 mm),
- incl. flexible connector, spirit level, earthing kit and ceiling rose
- without base

Description	Color	Cat. ref.
height 2m	anodised aluminium	<b>DAF2452000ELN</b>
height 2m	pure white	<b>DAF24520009010</b>



M2024

#### Partition for DA 200-45

- to be ordered separately

Description	Pack qty.	Cat. ref.
partition 2 m	50 m	<b>M2024</b>



L4770

#### Frame for 45 mm accessories

- to mount vertically 45 mm accessories like switches, RJ45...

Description	Pack qty.	Cat. ref.
frame	10	<b>L4770</b>

**Single sided pole DA 200-80 for accessories 90 mm**

- with flexible ceiling connector
- slightly curved profile (68 x 98 mm),
- incl. flexible connector, spirit level, earthing kit and ceiling rose
- without base

Description	Color	Cat. ref.
height 2m	anodised aluminium	<b>DAF802000ELN</b>
height 2m	pure white	<b>DAF8020009010</b>



DAF802000ELN

**Double sided pole DA 200-80 for accessories 60 mm**

- with flexible ceiling connector
- slightly curved profile (136 x 98 mm),
- incl. flexible connector, spirit level, earthing kit and ceiling rose
- without base

Description	Color	Cat. ref.
height 2m	anodised aluminium	<b>DAF2802000ELN</b>
height 2m	pure white	<b>DAF28020009010</b>

**Base for single sided pole**

- cast iron base (to be ordered separately)
- weight: 15 kg
- dimension: 300 x 300 x 26 mm



Description	Cat. ref.
base for DA 200-45 / DA 200-80	<b>DAFF20007035</b>

**Base for double sided pole**

- cast iron base (to be ordered separately)
- weight: 15 kg
- dimension: 300 x 340 x 26 mm

Description	Cat. ref.
base for DA 200-45 / DA 200-80	<b>DAFF220007035</b>

### Posts (P) for

- accessories 45 mm
- accessories 60 mm and ecoline

Special finishes and RAL colours available on request.

### Material

- body and cover: aluminium
- end plate: polyamide
- fixing system: metal

### Colours

- anodised aluminium, ELN
- pure white, RAL 9010



DAP45700ELN

### Post single sided DA 200-45 for accessories 45 mm

- dimensions 66 x 66 mm, height 700 mm

Description	Color	Cat. ref.
aluminium post for accessories 45 mm	anodised aluminium	<b>DAP45700ELN</b>
aluminium post for accessories 45 mm	pure white	<b>DAP457009010</b>

### Post double sided DA 200-45 for accessories 45 mm

- dimensions 130 x 66 mm, height 700 mm

Description	Color	Cat. ref.
aluminium post for accessories 45 mm	anodised aluminium	<b>DAP245700ELN</b>
aluminium post for accessories 45 mm	pure white	<b>DAP2457009010</b>

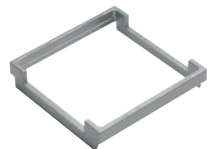


M2024

### Partition for DA 200-45

- for accessories 45 mm
- to be ordered separately

Description	Pack qty.	Cat. ref.
PVC partition, length 2m	50 m	<b>M2024</b>



L4770

### Frame for 45 mm accessories

- to mount vertically 45 mm accessories like switches, RJ45...

Description	Pack qty.	Cat. ref.
frame	10	<b>L4770</b>

### Floor-fed service pillar, single-sided

- aluminium installation pillar for front-latching installation devices with modular covers
- slightly convex profile (68 x 98 mm)
- floor plate (168 x 138 mm)

Description	Color	Cat. ref.
floor-fed service pillar, 650 mm	anodised aluminium	<b>DAP80650ELN</b>
floor-fed service pillar, 650 mm	pure white	<b>DAP806509010</b>



DAP280650ELN

### Floor-fed service pillar, double-sided

- aluminium installation pillar for front-latching installation devices with modular covers
- slightly convex profile (130 x 98 mm)
- floor plate (168 x 200 mm)

Description	Color	Cat. ref.
floor-fed service pillar, 2-sided, 650 mm	anodised aluminium	<b>DAP280650ELN</b>
floor-fed service pillar, 2-sided, 650 mm	pure white	<b>DAP2806509010</b>



M2026

### Partition for DA 200-80

- for accessories 60 mm
- to be ordered separately

Description	Pack qty.	Cat. ref.
PVC partition, length 2m	50 m	<b>M2026</b>

**Technical data**

- galvanised steel
- rust protection
- adapted for conduits with a diameter of 25mm
- special plate adapted for trunking installation (25 or 38 mm height)
- supply unit made of polyamide according to EN 50085-2-2

**Application**

- adapted to install devices
- 3 compartments
- mounting in screed
- height adjustable by lid and frame, 80 - 110 mm

**Plates**

Function as an outlet box for install power and data

**Lid**

- for dry rooms with dry cleaned floors
- carpet or tile flooring height of 8 mm

**Service outlet box**

- dimensions: 269 x 269 mm

Description

service outlet box, outlet and lid

Cat. ref.

**UDBSQ06**



UDBSQ06

**Plates**

Description

blank plate in sheet steel for service outlet box

13A BS twin switched socket outlet (incl. plate and module)

data outlet plate, 2 x 2 gang (without data module)

socket modules plate, 2 x 2 gang (without data module)

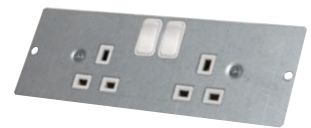
Cat. ref.

**GTVPB00**



GTVPB00

**GTVBS25**



GTVBS25

**GTVDP4M**



GTVDP4M

**GTVSP452**



GTVSP452

**Modules**

Description

RJ45 data module, keystone 8 pin cat6 data, dim. 22.5 x 45 mm

RJ11 data module, keystone 4 pin cat6 telephone, dim. 22.5 x 45 mm

blank module in white plastic, dim. 22.5 x 45 mm

13A BS module, dim. 45 x 45 mm

Cat. ref.

**WGMRJ456**



WGMRJ456

**WGMRJ11**



WGMRJ11

**WGMV1**



WGMV1

**WGSM113**



WGSM113



The service pole and post “RS design” offers a fast and convenient solution to supply a workstation with energy and data. The pre-wired and preassembled service pole system allows to realise fast installation without tools.

**Delivered with**

- collar,
- quick fix system,
- earthing kit,
- flexible ceiling connection for mobile pole, base to be ordered separately,
- outlet box with 45mm accessories pre-mounted and wired.
- cables of 6,5m length for poles and 3,5m for posts, minimum 3m cables out of the product.

**Characteristics**

- The range of poles is composed of 3 lengths of profile:
- from 2700 to 3000mm
  - from 3000 to 3300mm
  - from 3300 to 3600mm

**Technical data**

- material: profile and lid in aluminium and outlet box in ABS
- colour: black RAL 9011
- 2 mounting sides

Complies with EN50085-1



DES2700ELS +  
DMF0012A009

**Empty fixed poles**

- to be equipped

Description	Cat. ref.
fixing height from 2.7 to 3 m for a suspended ceiling height of 2.65 m	<b>DES2700ELS</b>
fixing height from 3 to 3.3 m for a suspended ceiling height of 2.95 m	<b>DES3000ELS</b>
fixing height from 3 to 3.3 m for a suspended ceiling height of 3.25 m	<b>DES3300ELS</b>

**Equipped fixed poles**

- equipped with 5 sockets + 4 RJ45 Cat.6 FTP

Description	Cat. ref.
fixing height from 2.7 to 3 m for a suspended ceiling height of 2.65 m	<b>DES2700FR</b>
fixing height from 3 to 3.3 m for a suspended ceiling height of 2.95 m	<b>DES3000FR</b>
fixing height from 3 to 3.3 m for a suspended ceiling height of 3.25 m	<b>DES3300FR</b>

**Empty fixed post**

- to be equipped

Description	Cat. ref.
height of 650mm	<b>DEP650ELS</b>



DEP650FR

**Equipped fixed post**

- equipped with 5 sockets + 4 RJ45 Cat.6 FTP

Description	Cat. ref.
height of 650mm	<b>DEP650FR</b>

**Empty mobile pole**

- to be equipped

Description	Cat. ref.
height of 2000mm	<b>DEF2000ELS</b>

**Equipped mobile pole**

- equipped with 5 sockets + 4 RJ45 Cat.6 FTP

Description	Cat. ref.
height of 2000mm	<b>DEF2000FR</b>



**Polestand**

Description	Cat. ref.
polestand	<b>DEFF</b>



DEFF

**Empty boxes**

- to be equipped with wiring accessories

Description	Cat. ref.
12 modules of 22.5 x 45mm	<b>DMF0012A009</b>
16 modules of 22.5 x 45mm	<b>DMF0016A009</b>
20 modules of 22.5 x 45mm	<b>DMF0020A009</b>
24 modules of 22.5 x 45mm	<b>DMF0024A009</b>



DMF0012A009

**Equipped box with wiring accessories**

- equipped with 5 sockets + 4 RJ45 Cat.6 FTP

Description	Cat. ref.
equipped box	<b>DEMFR</b>



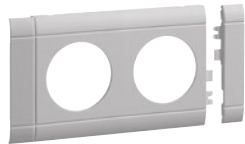
DEMFR

The ecoline range only fits in DA 200-80 poles and posts.  
- compact size with quick plugin technique  
- the connector G4703 must be used for connecting the outlet

**Colours**  
For lids:  
- grey RAL, 7035  
- white, RAL 9010  
- lacquered alu, LAN



GE20119010



GB080207035



G4703



G4713



G4733

**Power outlet**

Description

Cat. ref.

**Double insulated socket outlet**

white RAL 9010	<b>GE20119010</b>
red	<b>GE20113020</b>

**Modular lid for double ecoline outlet**

grey RAL 7035	<b>GB080207035</b>
white, RAL 9010	<b>GB080209010</b>
lacquered alu	<b>GB08020LAN</b>

**Connectors**

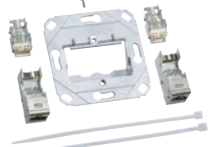
incoming connector 3 pole	<b>G4703</b>
outcoming connector 3 pole	<b>G4713</b>

**Supply cable 3 pole**

300 mm	<b>G4733</b>
450 mm	<b>G4743</b>
750 mm	<b>G4753</b>
1500 mm	<b>G4796</b>
2500 mm	<b>G4797</b>
4500 mm	<b>G4798</b>



G2850



G3155



G32249010

**Data outlet**

- quick clip in box for vertical mounting in poles DA 200-80  
- to standards EN 55 022 and 50 082 T1  
- LSA+ connectors

R4545 ecoline outlet:

- 8 pole connecting module with RJ45 engines oriented downwards  
- colour codes according to EIA/TAI-568 A/B  
- always double  
- up to 250 Mhz

Modular lids:

- cover cut outs, with label, to be clipped on the accessories  
- with 2 plug in end parts  
- central cover with integrated protection lids

Description

Cat. ref.

**Outlet box for RJ45 socket**

empty box for socket G3155	<b>G2850</b>
----------------------------	--------------

**Double RJ45 socket**

double data outlet cat. 6 UTP	<b>G3155</b>
-------------------------------	--------------

**Modular lid with cover for double RJ45 socket**

white, RAL 9010	<b>G32249010</b>
lacquered alu	<b>G3234LAN</b>

**Intermediary lid**

- for combination of power and data outlets

Description

Cat. ref.



GV0807035

grey RAL 7035	<b>GV0807035</b>
white, RAL 9010	<b>GV0809010</b>
lacquered alu	<b>GV080LAN</b>

**Mounting boxes for 60 mm accessories**

Description	Pack qty.	Cat. ref.
single mounting box, dim. 64 x 71 x 42 mm	5	<b>G2850</b>
double mounting box, dim. 64 x 142 x 42 mm	2	<b>G2860</b>



G2850

- for BS socket

Description	Cat. ref.
1 gang mounting box	<b>BS2850</b>
2 gang mounting box	<b>BS2860</b>



G2860

**Mounting boxes for EEC accessories**

- large mounting boxes to be fixed on poles and posts DA 200-80  
- EEC accessories up to 32A and compatible with different brands

- lids in PC / ABS with cut out to the size of the EEC socket outlet  
- delivery: mounting box, 4 self tapping screws and 2 cables tighteners



G2745

Description	Cat. ref.
<b>EEC mounting box</b> polyamide box with 4 screws and 2 cables tighteners	<b>G2745</b>

**Lids for DA 200-80**

white, RAL 9010	<b>G33759010</b>
lacquered alu	<b>G3375LAN</b>



G3375

**Frames for 45 mm accessories**

- to be clipped on the front of the profile

Description	Cat. ref.
<b>Single supports</b>	
white, RAL 9010	<b>GT4519010</b>
black, RAL 9011	<b>GT4519011</b>
lacquered alu, ALU	<b>GT451ALU</b>
<b>Double supports</b>	
white, RAL 9010	<b>GT4529010</b>
black, RAL 9011	<b>GT4529011</b>
lacquered alu, ALU	<b>GT452ALU</b>
<b>Triple supports</b>	
white, RAL 9010	<b>GT4539010</b>
black, RAL 9011	<b>GT4539011</b>
lacquered alu, ALU	<b>GT453ALU</b>
<b>Insulation box</b> for frames 45 x 45 mm	<b>LFF79H</b>



GT4519010



GT4529010



GT4539010



LFF79H

- anodised aluminium profile fitted with 2 mounting frames
- empty or equipped in different configurations
- separation low and very low voltage
- quick fit connections Winsta technique from Wago.
- quick and protected connection with prepared supply cables

- special equipment possible on request

### Material

Anodised aluminium profile, PVC covers and mounting frames



NRF0008A00

### Empty blocks

- size of 1 module: 22.5 x 45 mm

Description	Cat. ref.
6 modules	<b>NRF0006A00</b>
8 modules	<b>NRF0008A00</b>
12 modules	<b>NRF0012A00</b>
16 modules	<b>NRF0016A00</b>
20 modules	<b>NRF0020A00</b>



NRF0004D00

### Pre-equipped blocks with quick fit connectors

Description	Cat. ref.
3 sockets 2P + E	<b>NRF0003D00</b>
4 sockets 2P + E	<b>NRF0004D00</b>
6 sockets 2P + E	<b>NRF0006D00</b>
3 sockets 2P + E and 2 special sockets 2P + E	<b>NRF0023D00</b>
4 sockets 2P + E and 3 special sockets 2P + E	<b>NRF0034D00</b>
4 sockets 2P + E and 2 sockets RJ45 Cat 6 UTP patch / patch	<b>NRF4204D00</b>



NRF0023D00



NRF4204D00



NRF0204B00

### Pre-equipped blocks with terminal and free space

Description	Cat. ref.
3 sockets 2P + E and 2 empty modules 22,5 mm	<b>NRF0203B00</b>
4 sockets 2P + E and 2 empty modules 22,5 mm	<b>NRF0204B00</b>
6 sockets 2P + E and 4 empty modules 22,5 mm	<b>NRF0406B00</b>



NRF4204K00

### Pre-equipped and pre-wired blocks

Description	Cat. ref.
4 sockets 2P + E with 3 m cable and quick fit connector	<b>NRF4204K00</b>
2 sockets RJ45 Cat 6 UTP with 3 m cable and RJ45 plug	
6 sockets 2P + E with 3 m cable and quick fit connector	<b>NRF4406K00</b>
4 sockets RJ45 Cat 6 UTP with 3 m cable and RJ45 plug	

**Pre-equipped blocks with cable and 2P sockets**

Description	Cat. ref.
3 x 2P + E + 6m cable with Wieland connector	<b>NRF0003G00</b>
4 x 2P + E + 6m cable with Wieland connector	<b>NRF0004G00</b>
6 x 2P + E + 6m cable with Wieland connector	<b>NRF0006G00</b>
3 x 2P + E with mechanical keying + 6m cable with Wieland connector	<b>NRF0030G00</b>
4 x 2P + E with mechanical keying + 6m cable with Wieland connector	<b>NRF0040G00</b>
2 x 2P + E + 2 x 2P + E with mechanical keying + 6 m cable with Wieland connector	<b>NRF0022G00</b>
2 x 2P + E + RCBO 16A 30mA + 6m cable with Wieland connector	<b>NRF0002G30</b>
2 x 2P + E, 2 x 2P + E with mechanical keying 2 RJ45 Cat6-9, + 6m cable with Wieland connector	<b>NRF5222G00</b>



NRF5222G00

**Pre-equipped blocks with cable and 2P+E sockets**

Description	Cat. ref.
6 x 2P Schuko socket with 1.5m cable and 1 x RJ45 shielded data socket cat.6	<b>DED001</b>
6 x 2P Schuko socket with 1.5m cable and 1 x RJ45 non shielded data socket cat.6	<b>DED002</b>
6 x 2P+E Schuko socket with 1.5m cable and 1 x RJ45 shielded data socket cat.6	<b>DED101</b>
6 x 2P+E Schuko socket with 1.5m cable and 1 x RJ45 non shielded data socket cat.6	<b>DED102</b>



DED001

**Cables and connectors**

- different types of ready to use cables for connecting multi outlet block or the ecoline sockets in multi outlet blocks

- all combinations of plugs, incoming / outgoing connectors Winsta type from WAGO  
- protected connections

Description	Cat. ref.
<b>Supply cables with incoming connector and 3P plug</b>	
1 m length	<b>G4721</b>
2 m length	<b>G4731</b>
3 m length	<b>G4741</b>
4 m length	<b>G4751</b>
5 m length	<b>G4761</b>
<b>Connecting cables 3 x 2.5mm<sup>2</sup> with incoming / outgoing connector</b>	
0.3 m length	<b>G4733</b>
0.45 m length	<b>G4743</b>
0.75 m length	<b>G4753</b>
1.5 m length	<b>G4796</b>
2.5 m length	<b>G4797</b>
4.5 m length	<b>G4798</b>
<b>Shunt - double</b>	
to connect sockets in parallel	<b>G4773</b>
<b>Connectors</b>	
incoming connector, used with connecting cable	<b>G4703</b>
outgoing connector, used on the outgoing side of ecoline sockets	<b>G4713</b>



G4741



G4743



G4773



G4703



G4713

- Flush mounting modules
- Hole diameter: 102 mm.

**Material**  
Aluminium / PVC

- Colours**
- body: anodised aluminium
  - cover: lacquered alu
  - sockets: black

Special equipment on request



G7343LAN

### Multi outlet module for flush mounting

- child safety
- cable: 3 m

Description

3 sockets 230 V 2 P + E

Cat. ref.

**G7343LAN**



G7345LAN

### Multi outlet module for flush mounting

- child safety
- cable: 3 m

Description

3 sockets 230 V 2 P + E, 2 sockets RJ45 Cat 6, patch / patch

Cat. ref.

**G7345LAN**



G7059

### Hole saw

Description

diam. 102 mm

Cat. ref.

**G7059**

- Flexible round trunking to bring power / data cables from the floor to the post and the multi outlet modules
- The rigidity of the trunking ensures good protection of the cables
- Easy to open / close with the clip system
- Supply of power and data cables
- Very flexible in all directions taking in consideration cable bending angle
- Extension just by adding one link

**Material**  
polyamide

**Colours**  
- grey, RAL 7035  
- black, RAL 7021 and RAL 9005

**Flexible round trunking**

- trunking with 2 compartments to supply power / data cables,
- bending radius 250 mm
- connecting to multi outlet modules
- delivery: mounting box, 4 self tapping screws and 2 cables tighteners



RK17035

Description	Pack qty.	Cat. ref.
<b>Flexible round trunking</b>		
grey, RAL 7035	1 m	<b>RK17035</b>
black, RAL 9005	1 m	<b>RK19005</b>
<b>Bases incl. adapter with cable clamp for fixing on floor, ceiling</b>		
grey, RAL 7035	1	<b>G71417035</b>
black, RAL 7021	1	<b>G71417021</b>
<b>Connection adapters</b>		
grey, RAL 7035	20	<b>RKA7035</b>
black, RAL 9005	20	<b>RKA9005</b>



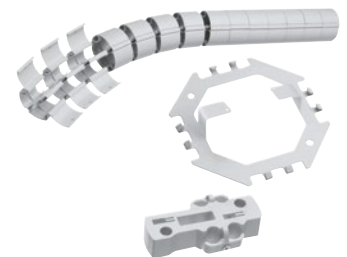
G71417035



RKA7035

**Flexible round trunking desk / floor set**

- trunking with 2 compartments to supply power / data cables
- bending radius 250 mm (14 links)
- to supply cables from the floor to the desk
- connecting adapter
- base (for fixing under a desk, 1 x adaptor G7117xxxx to be ordered separately)



G71117035

Description	Pack qty.	Cat. ref.
grey, RAL 7035	0.8 m	<b>G71117035</b>
black, RAL 7021	0.8 m	<b>G71117021</b>

**Wall support**

Description	Pack qty.	Cat. ref.
support for round trunking	5	<b>RKWH000</b>



RKWH000

**Cover sleeves**

- sleeve in 2 parts
- to be combined with base G7141xxxx

Description	Pack qty.	Cat. ref.
<b>Cover sleeves for connection with floor trunking G7130xxxx</b>		
grey, RAL 7035	1	<b>G71227035</b>
black, RAL 7021	1	<b>G71227021</b>
<b>Cover sleeves for connection with floor trunking AKA181250ELN</b>		
grey, RAL 7035	1	<b>G71237035</b>
black, RAL 7021	1	<b>G71237021</b>
<b>Cover sleeves for floor connection</b>		
grey, RAL 7035	1	<b>G71267035</b>
black, RAL 7021	1	<b>G71267021</b>



G71227035



G71237035



G71267035



- Flexible floor trunking with limited height to run cables on the floor
- Respect the 250 mm bending radius
- 2 compartments to supply power / data cables

### Colours

- grey, RAL 7035
- black, RAL 7021 and RAL 9005

**Material**  
polyamide



FK17035

### Flexible floor trunking

- trunking with 2 compartments to run power / data cables on the floor
- bending radius of 250 mm kept

Description	Pack qty	Cat. ref.
grey, RAL 7035	1 m	<b>FK17035</b>
black, RAL 9005	1 m	<b>FK19005</b>

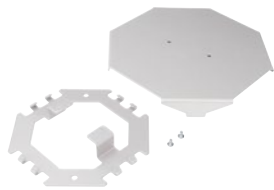


FKWB00

### Support with cable clamps

- support to fix the trunking on the floor or the wall

Description	Cat. ref.
support with cable clamps	<b>FKWB000</b>



FKB7035

### Universal derivation complete

- to go from alu floor trunking AKA to flexible floor trunking
- two parts: base and cover
- material: steel

Description	Pack qty	Cat. ref.
grey, RAL 7035	1	<b>FKB7035</b>
black, RAL 7021	1	<b>FKB9005</b>



L5106

### Double sided adhesive tape

- to fix trunking on the floor

Description	Pack qty	Cat. ref.
double sided adhesive tape	1	<b>L5106</b>



G71407035

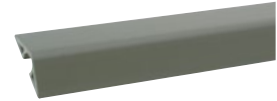
### Universal derivation cover only

- to change directions between alu floor trunking AKA and flexible floor trunking
- material: steel

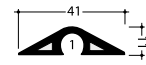
Description	Pack qty	Cat. ref.
grey, RAL 7035	1	<b>G71407035</b>
black, RAL 7021	1	<b>G71407021</b>

**PVC floor trunking**

- base and cover in PVC
- base with pre-punched holes and cover
- 2 meters
- other length on request (max. 6 m)



SL1104007030



Description

Pack qty

Cat. ref.

**Floor trunking 11 x 41 mm**

grey, RAL 7030

70 m

**SL1104007030**

**Floor trunking 17 x 75 mm**

grey, RAL 7030

32 m

**SL1807507030**

light grey, RAL 7035

32 m

**SL1807507035**

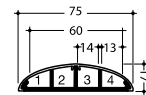
brown, RAL 8014

32 m

**SL1807508014**



SL1807507030

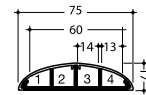


**PVC and aluminium floor trunking**

- cover aluminium, base PVC
- dimensions 17 x 75 mm
- 2 meters
- other length on request (max. 6 m)



SLA180750ELN



Description

Pack qty

Cat. ref.

aluminium

10 m

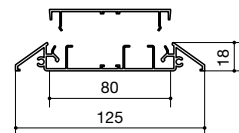
**SLA180750ELN**

**Aluminium floor trunking**

- floor trunking in aluminium for heavy loads
- 2 or 4 compartments
- dimensions 18 x 125 mm
- 2 meters
- easy access via cover
- other length on request (max. 6 m)



AKA181250ELN



Description

Pack qty

Cat. ref.

aluminium

12 m

**AKA181250ELN**

- cable outlet for raised floor with a thickness of 20 mm or more, dry cleaned floors
- diameter 132 mm, flush fitting 112 mm

### Colours

- steel grey, RAL 7011
- grey, RAL 7035
- black, RAL 9005

### Material

polyamide without halogen



LAFKG209005

### Cable outlets for flexible floor trunking

- for dry cleaned floors

Description	Pack qty	Cat. ref.
<b>For floor thickness &gt; 20 mm</b>		
steel grey, RAL 7011	1	<b>LAFKG207011</b>
grey, RAL 7035	1	<b>LAFKG207035</b>
black, RAL 7021	1	<b>LAFKG209005</b>
<b>For floor thickness &lt; 20 mm</b>		
grey, RAL 7035	1	<b>LAFKK207035</b>
black, RAL 7021	1	<b>LAFKK209005</b>



LARKG207035

### Cable outlets for round flexible trunking

- for dry cleaned floors

Description	Pack qty	Cat. ref.
<b>For floor thickness &gt; 20 mm</b>		
steel grey, RAL 7011	1	<b>LARKG207011</b>
grey, RAL 7035	1	<b>LARKG207035</b>
black, RAL 7021	1	<b>LARKG209005</b>
<b>For floor thickness &lt; 20 mm</b>		
grey, RAL 7035	1	<b>LARKK207035</b>
black, RAL 7021	1	<b>LARKK209005</b>

- decentralised and flexible connection
- power connection with up to 6 incoming connectors Winsta type from Wago
- the data repartition point for RJ45 is fitted with dust protective covers

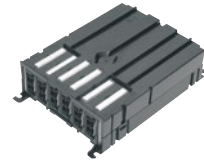
**Delivery**  
box fitted with 6 incoming connectors.

**Colour**  
black

**Material**  
PC / ABS

**Power repartition**

Description	Pack qty	Cat. ref.
complete box with 6 incoming quick fit connectors	1	<b>G8360</b>



G8360

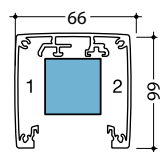
**Data repartition**

Description	Pack qty	Cat. ref.
complete box with 6 incoming connectors RJ45 Cat 6 FTP	1	<b>G3160</b>

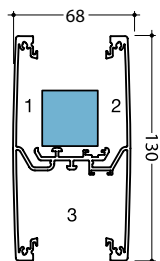


G3160

Poles / posts DA 200-45



single sided

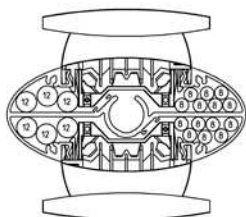


double sided

	cable type	number of cables		
		area 1	area 2	area 3
single sided	power (3 x 2.5 mm <sup>2</sup> )	3	3	-
	data (L 120 - 4 paires)	8	3	-
double sided	power (3 x 2.5 mm <sup>2</sup> )	4	4	14
	data (L 120 - 4 paires)	9	9	30

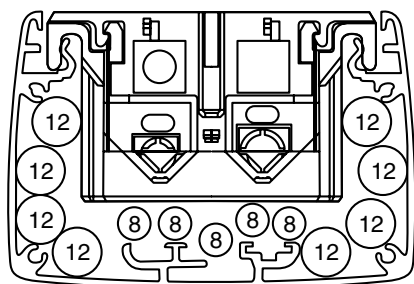
Fixing system space.

Pressure fitting and mobile poles



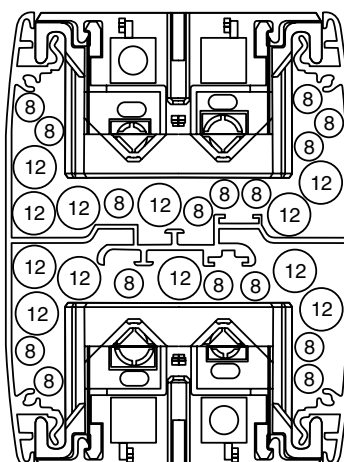
	cable capacity	cable type			
		area 1	area 2	area 3	area 4
simple and double sided pressure fitting and mobile	power current (ø 10 - 11 mm)	3	3	3	3
	vlv data current (ø 7 mm)	7	7	7	7

Example: installation in pole DA 200-80



**Single sided pole DA 200-80:**

Min. 6 x diam. 12 mm (power)  
Min. 4 x diam. 8 mm (data)

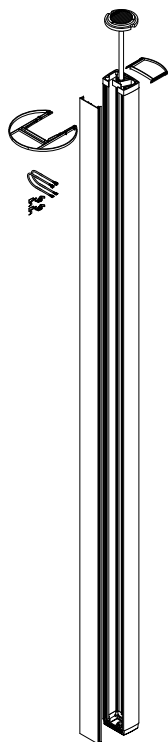


**Double sided pole DA 200-80:**

Min. 12 x diam. 12 mm (power)  
Min. 8 x diam. 8 mm (data)

**Selection chart for pressure fixing poles DA 200 profile length**

This chart will assist you in selecting the right pole depending on available height and way of installation.



**DA 200-45**

reference	profile length	suspended ceiling	concrete ceiling
DAS452700xxxx DAS2452700xxxx	2,657 mm	up to max, 2,650 mm	2,700 - 3,000 mm
DAS453000xxxx DAS2453000xxxx	2,957 mm	up to max, 2,950 mm	3,000 - 3,300 mm
DAS453300xxxx DAS2453300xxxx	3,257 mm	up to max, 3,250 mm	3,300 - 3,600 mm

**DA 200-80**

reference	profile length	suspended ceiling	concrete ceiling
DAS802500xxxx DAS2802500xxxx	2,457 mm	up to max, 2,450 mm	2,500 - 2,800 mm
DAS802800xxxx DAS2802800xxxx	2,757 mm	up to max, 2,750 mm	2,800 - 3,100 mm
DAS803100xxxx DAS2803100xxxx	3,057 mm	up to max, 3,050 mm	3,100 - 3,400 mm
DAS803400xxxx DAS2803400xxxx	3,357 mm	up to max, 3,350 mm	3,400 - 3,700 mm

xxxx (colour): ELN (anodised alu) or 9010 (white)

**For example:** when the concrete ceiling is at a height of 2800 mm the pole DAS4527000 can be used provided the suspended ceiling is at a max height of 2,650 mm.

**For other lengths not indicated in the above chart, please consult us.**

